

# DIRECT SCREW RETAINED SOLUTIONS ON PLAIN ABUTMENT

Folder name to download: **SWM\_PLAIN\_DIRECT\_Screw\_retained\_on\_abutment**

Display name in Exocad: **SWM - PLAIN Direct - Screw retained on abutment [Ti/CrCo]**

## CUSTOM MADE SOLUTIONS FROM DISC

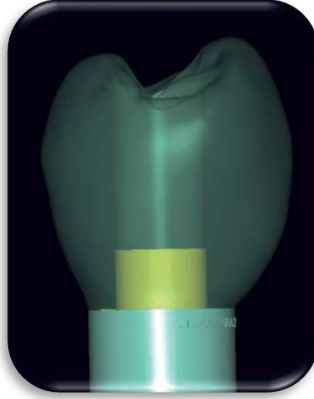
*Encrypted connection millable only by Sweden & Martina Echo Milling Center*

Libraries for the creation of prosthesis using PLAIN scanbody screwed directly onto the abutment.

To be used when taking an impression with the implant and abutment already positioned in the mouth.

In this case the lab technician can operate regardless of the implant and transgingival height, as he just need to know the abutment diameter.

For this cases, only the PLAIN analogue must be used, choosing the one corresponding to each diameter.



### MULTIPLE RESTORATIONS (Titanium/CrCo)

∅ 3.30 (analog A-PLAIN-ANA-330-DIG)

∅ 3.80 (analog A-PLAIN-ANA-380-DIG)

∅ 4.25 (analog A-PLAIN-ANA-425-DIG)

∅ 5.00 (analog A-PLAIN-ANA-500-DIG)

Folder name to download: **SWM\_PLAIN\_CSR\_Sleeve\_Angled\_hole\_Multiple\_H6**

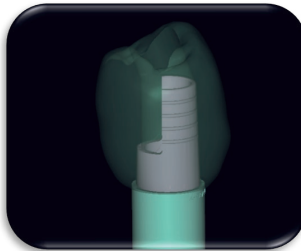
Display name in Exocad: **SWM - PLAIN CSR - Sleeve Angled hole (A-PLAIN-MDT-6)**

## CUSTOM MADE SOLUTIONS FROM DISC

*Encrypted connection millable only by Sweden & Martina Echo Milling Center*

Library for designing of prostheses using PLAIN scanbody screwed directly onto the abutment. To be used in the case of impression taking with implant and abutment already positioned in the mouth. This solution is dedicated to PLAIN abutments with a diameter of 3.80 mm, currently available only for CSR implants (just DAT connection, not DAT-N). To manage this type of case, dedicated PLAIN analogs must be used.

### MULTIPLE RESTORATIONS



∅ 3.80 H6 mm  
(analog A-PLAIN-ANA-380-DIG)



∅ 3.80 H6 mm cut at 4 mm  
(analog A-PLAIN-ANA-380-DIG)

Special screw for angled hole included, free of charge.

If you do not own the appropriate DSPDCLH-24 or DSPDCLH-32 screwdriver, please order it separately.

# DIRECT SCREW RETAINED SOLUTIONS ON PLAIN ABUTMENT

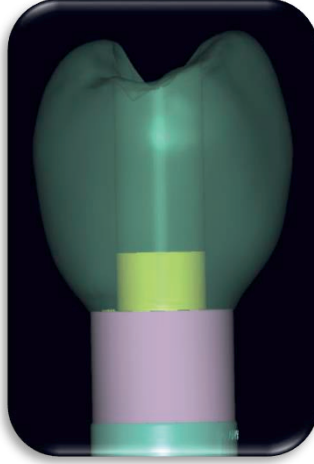
Folder name to download: **SWM\_PLAIN\_ON\_IMPLANT\_Screw\_retained\_on\_abutment**

Display name in Exocad: **SWM - PLAIN on Implant - Screw retained on abutment [Ti/CrCo]**

## CUSTOM MADE SOLUTIONS FROM DISC

*Encrypted connection millable only by Sweden & Martina Echo Milling Center*

Libraries for the creation of prosthesis using PREMIUM scanbody screwed directly onto the abutment. To be used when taking an impression with the implant and abutment already positioned in the mouth. In this case the lab technician can choose the desired transgingival height of the abutment where to start the prosthesis. For this cases, only the PREMIUM/ SHELTA analogue must be used, choosing the one corresponding to each diameter.



### MULTIPLE RESTORATIONS (Titanium/CrCo)

∅ 3.30 PREMIUM SLIM (analog A-ANA-330-DIG)

∅ 3.80 PREMIUM KOHNO (analog A-ANA-380-DIG)

∅ 4.25 SHELTA (analog SH-ANA-425-DIG)

∅ 5.00 SHELTA (analog SH-ANA-500-DIG)

Special screw for angled hole included, free of charge.  
If you do not own the appropriate DSPDCLH-24 or DSPDCLH-32 screwdriver, please order it separately.